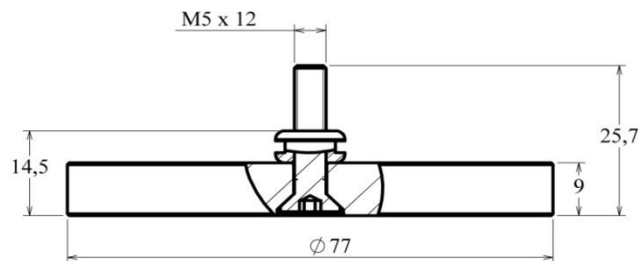


PPP77A

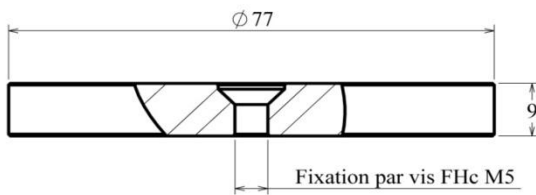
Plaque polaire plate $\varnothing 77$
Masse 330 g



PPR77A

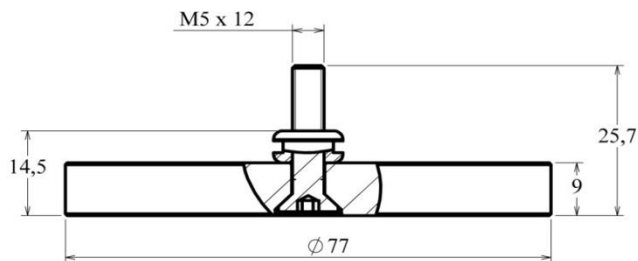
Plaque polaire rotulée $\varnothing 77$
Masse 335 g

*Ce document est la propriété de la société LUXALP.
Il ne peut être reproduit, ni communiqué.*



PPP77A

Polar plate $\varnothing 77$
Weight 330 g



PPR77A

Rotary polar plate $\varnothing 77$
Weight 335 g

*This document is the property of LUXALP.
Can not be reproduced or transmitted.*